

COMPABLOC 3000

Drive systems

Installation and maintenance

COMPABLOC 3000

Drive systems

NOTE - CAUTION - CONTENTS

NOTE

LERROY-SOMER reserves the right to modify the characteristics of its products at any time in order to incorporate the latest technological developments. The information contained in this document may therefore be changed without notice.

LERROY-SOMER gives no contractual guarantee whatsoever concerning the information published in this document and cannot be held responsible for any errors it may contain, nor for any damage resulting from its use.

CAUTION



Throughout the manual, this symbol warns of consequences which may arise from inappropriate use of the Compabloc 3000 since risks may lead to material or physical damage.

Despite all the care taken in the manufacture and checking of this equipment, LERROY-SOMER cannot guarantee that lubricant will not escape during the product's lifetime. If slight leaks could have serious consequences for the safety of people and property, the installer and user should take all necessary precautions to avoid such consequences.

CONTENTS

1 - INSTALLATION RECOMMENDATIONS	15
2 - LUBRICATION	15
3 - HOW TO ORDER	15
4 - INSTRUCTIONS FOR DISMANTLING AND REBUILDING	15
4.1 - Dismantling	15
4.2 - Rebuilding	15
5 - EXPLODED VIEWS - WEARING PARTS - PARTS LIST	16
5.1 - Compabloc 1 stage	16
5.1.1 - Compabloc 1 stage exploded views : Cb 3031 to Cb 3531	16
5.1.2 - Compabloc 1 stage 1st maintenance parts : Cb 3031 to Cb 3531	16
5.1.3 - Compabloc 1 stage parts list : Cb 3031 to Cb 3531	17
5.2 - Compabloc multistage	18
5.2.1 - Compabloc multistage exploded views : Cb 3032 to Cb 3533	18
5.2.2 - Compabloc multistage 1st maintenance parts : Cb 3033 to Cb 3533	18
5.2.3 - Cb 30xx to Cb 35xx parts list	19
5.3 - Universal mounting	20
5.3.1 - Universal mounting exploded views	20
5.3.2 - Universal mounting (MU) parts list	21
5.3.3 - Universal mounting (MU) 1st maintenance parts	21
5.4 - Input shaft AP	21
5.4.1 - AP exploded views	21
5.4.2 - AP parts list	21
5.4.3 - AP 1st maintenance parts	21
5.5 - Motor	22
5.5.1 - Motor exploded views	22
5.5.2 - Motor parts list	22
6 - PLUGS POSITIONS - OIL QUANTITIES	23
6.1 - Compabloc 1 stage	23
6.1.1 - Plugs positions	23
6.1.2 - Oil quantity in litre (considering operating position)	23
6.2 - Compabloc multistage	24
6.2.1 - Plugs positions	24
6.2.2 - Oil quantity in litres (considering operation position)	24

COMPABLOC 3000

Drive systems

INSTALLATION RECOMMENDATIONS

1 - INSTALLATION RECOMMENDATIONS

Gearbox:

For the installation of Compabloc 3000 gearbox, follow the "Recommendations" chapter in the general manual.

Motor:

For connection of the complete drive system (with brake), follow the instructions of corresponding maintenance delivered with the goods in the parcel.

2 - LUBRICATION

For operation in ambient temperature between -10°C and +40°C, Compabloc Cb 3000 reducer is shipped, as standard, with mineral Extreme Pressure oil : EP ISO VG 220.



You must use an oil of the recommended type.

Polyglycol lubricants cannot be mixed with mineral or synthetic lubricants of a different type.

Maintenance oil change.

- Mineral oil : drain every 5000 hours of operation.
- Synthetic oil PAO (polyalphaolefine) : drain every 25000 hours of operation.
- From -30°C to +60°C : synthetic oil PAO ISO VG 150.
- From -30°C to -10°C : synthetic oil PAO ISO VG 32.
- From -30°C to +60°C and for use in the food industry : synthetic oil PAO H1 ISO VG 150.

Oil capacities.

The oil capacities shown in table (see § 6.1.2 and 6.2.2) are approximative values and should be used only as reference in determining how much oil to provide. The proper oil levels can only be determined by **filling the reducer to the level of the plug (Cb 30 excepted).**

3 - HOW TO ORDER

Necessary information

a) from the gearbox nameplate :

- 1- gearbox model and size ;
- 2- operating position ;
- 3- fixing type (S with foot, BS, BDN or BT...) ;
- 4- exact reduction ;
 - possible options ;
- 5- serial number ;
- 6- lubricant ;
- 7- backlash : Standard (DYNABLOC).

b) from the appropriate part list :

- part description and item number.

c) Where a motor is fitted to the gearbox, from the motor nameplate :

(for the motor : see the corresponding manual)

- motor type ;
- No. of poles (or speed in min⁻¹) ;
- power in kW (or N.m).

Caution : the motor requires a special shaft and flange for integral mounting (MI) with the gearbox.

4 - INSTRUCTIONS FOR DISMANTLING AND REBUILDING

4.1 - Dismantling

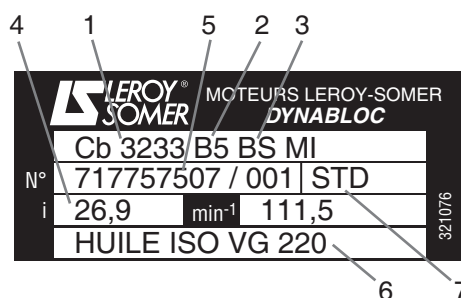
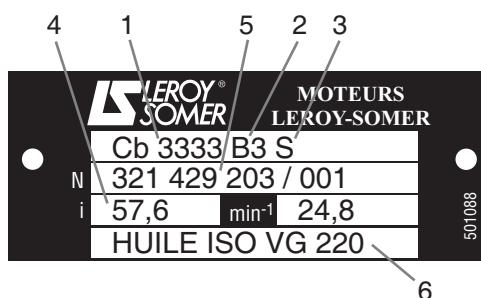
- Remove the geared motor from the machine.
- Drain the gearbox.
- Remove the motor (undo the nuts 184 on motor side).
- Dismantle the gearbox.



Utilisation of appropriate tools (hub-puller, bearing-puller, mallets, adjustable spanners, circlips pliers, assorted screwdrivers, taps and dies, press...) as well as applying our rigorous procedures (M32 S244 §9 for gearbox and T32 S69 §4 for Universal mounting) the intervention of an authorised Leroy-Somer Service Centre will be required to maintain the original high performance of the drive system.

4.2 - Rebuilding

- Proceed in the reverse order to dismantling.
- Oil the lip-seals ; they must be fitted very carefully so as to avoid damage to the running seal area ; the use of protection sleeves is recommended to cover the sharp edges of shaft keyways.
- Nuts must be fixed with medium strength anaerobic adhesive.
- Re-fit the "O"rings, checking that they are positioned correctly.
- Fill with oil up to the appropriate level (see § 6.1.2 and 6.2.2).
- Turn the shaft to check that the box is functioning satisfactorily before finally mounting it in position.



COMPABLOC 3000

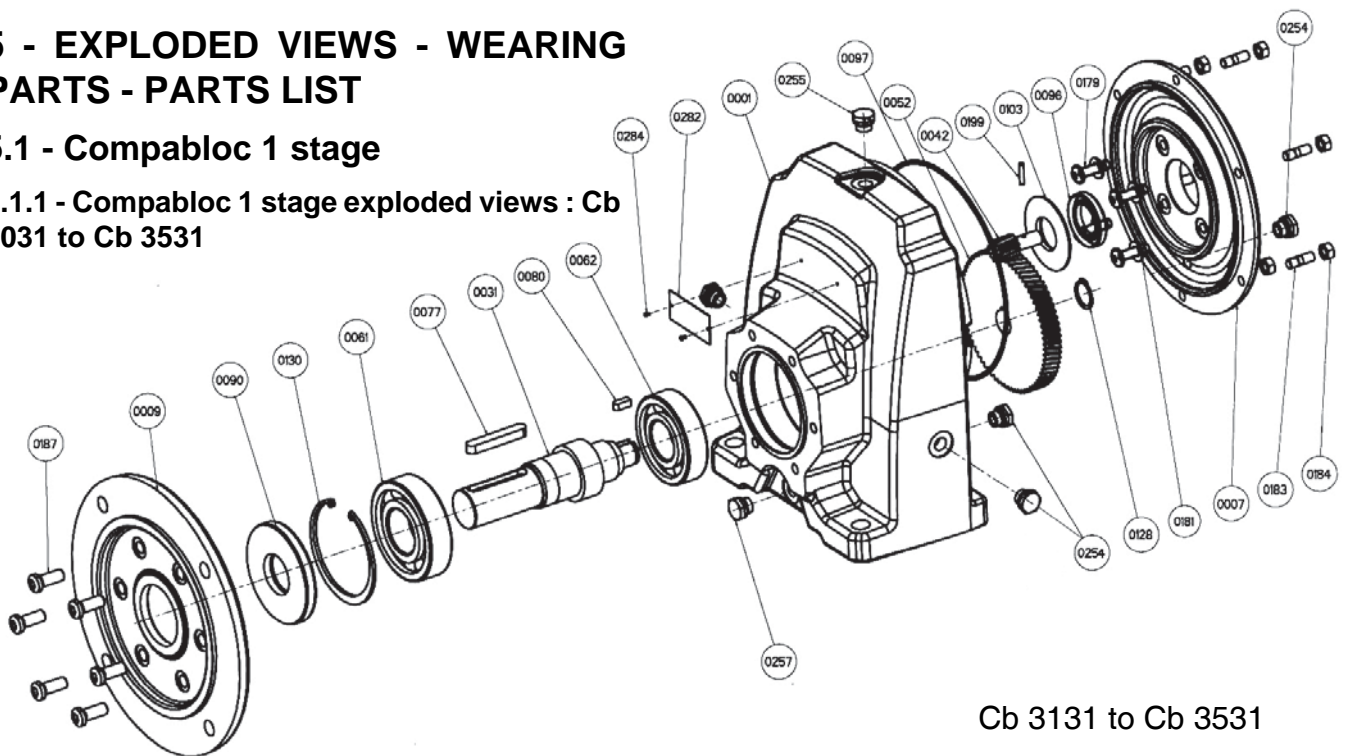
Drive systems

EXPLODED VIEWS - WEARING PARTS - PARTS LIST

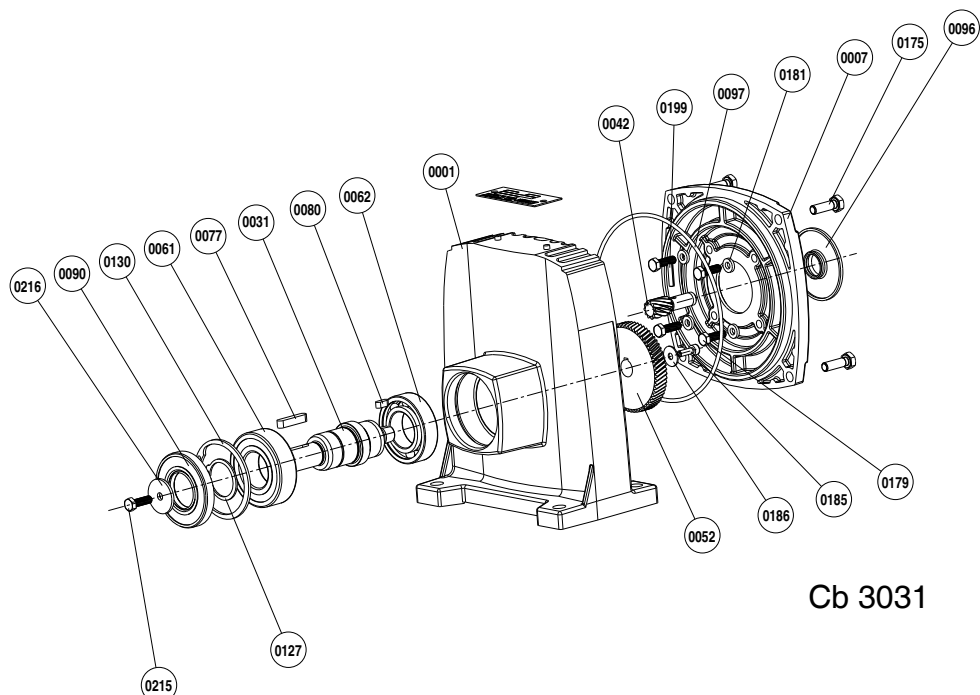
5 - EXPLODED VIEWS - WEARING PARTS - PARTS LIST

5.1 - Compabloc 1 stage

5.1.1 - Compabloc 1 stage exploded views : Cb 3031 to Cb 3531



Cb 3131 to Cb 3531



Cb 3031

5.1.2 - Compabloc 1 stage 1st maintenance parts : Cb 3031 to Cb 3531

REP	Description	Whatever the size of the gearbox may be
0061	Bearing front	YES
0062	Bearing back	YES
0090	Ring seal	YES
0092	Ring sealed reinforced	YES (Cb 3031 excepted)
0096	Ring seal	YES

COMPABLOC 3000**Drive systems**

EXPLODED VIEWS - WEARING PARTS - PARTS LIST

**5.1.3 - Compabloc 1 stage parts list : Cb 3031
to Cb 3531**

REP	Description	Cb 3031	Cb 3131	Cb 3231	Cb 3331	Cb 3431	Cb 3531
		Qty	Qty	Qty	Qty	Qty	Qty
0001	Housing	1	1	1	1	1	1
0007	Face-plate	1	1	1	1	1	1
0009	Built-up flange	1	1	1	1	1	1
0031	Output shaft	1	1	1	1	1	1
0042	Pinion GV	1	1	1	1	1	1
0052	Wheel GV	1	1	1	1	1	1
0061	Bearing front	1	1	1	1	1	1
0062	Bearing back	1	1	1	1	1	1
0077	Output shaft key	1	1	1	1	1	1
0080	Wheel key GV	1	1	1	1	1	1
0090	Ring seal	1	1	1	1	1	1
0092	Ring sealed reinforced (option)	0	1	1	1	1	1
0096	Ring seal	1	1	1	1	1	1
0097	Input "O"ring seal	1	1	1	1	1	1
0103	Oil deflector	0	1	1	1	1	1
0105	Lifting ring seal	0	1	1	1	1	1
0127	Bearing circlips	1	0	0	0	0	0
0128	Stop circlips wheel GV	0	1	1	1	1	1
0130	Bearing circlips	1	1	1	1	1	1
0175	Screw for face-plate	4	0	0	0	0	0
0179	Screw face-plate	4	4	4	4	4	4
0181	Screw washer	4	4	4	4	4	4
0183	Input fixing stud	0	4	5	6	4	8
0184	Nut	0	4	5	6	4	8
0185	Washer GV wheel	1	0	0	0	0	0
0186	Screw washer	1	0	0	0	0	0
0187	Fixing screw	4	4	4	6	6	6
0199	Pin GV pinion	1	1	1	1	1	1
0213	Flange pin	0	1	1	1	1	1
0250	Lifting ring	0	1	1	1	1	1
0254	Plug	1	4	4	4	4	3
0255	Breather plug	0	1	1	1	1	1
0257	Drain plug	0	1	1	1	1	1
0282	Nameplate	1	1	1	1	1	1
0284	Rivets (nameplate)	0	2	2	2	2	2

COMPABLOC 3000

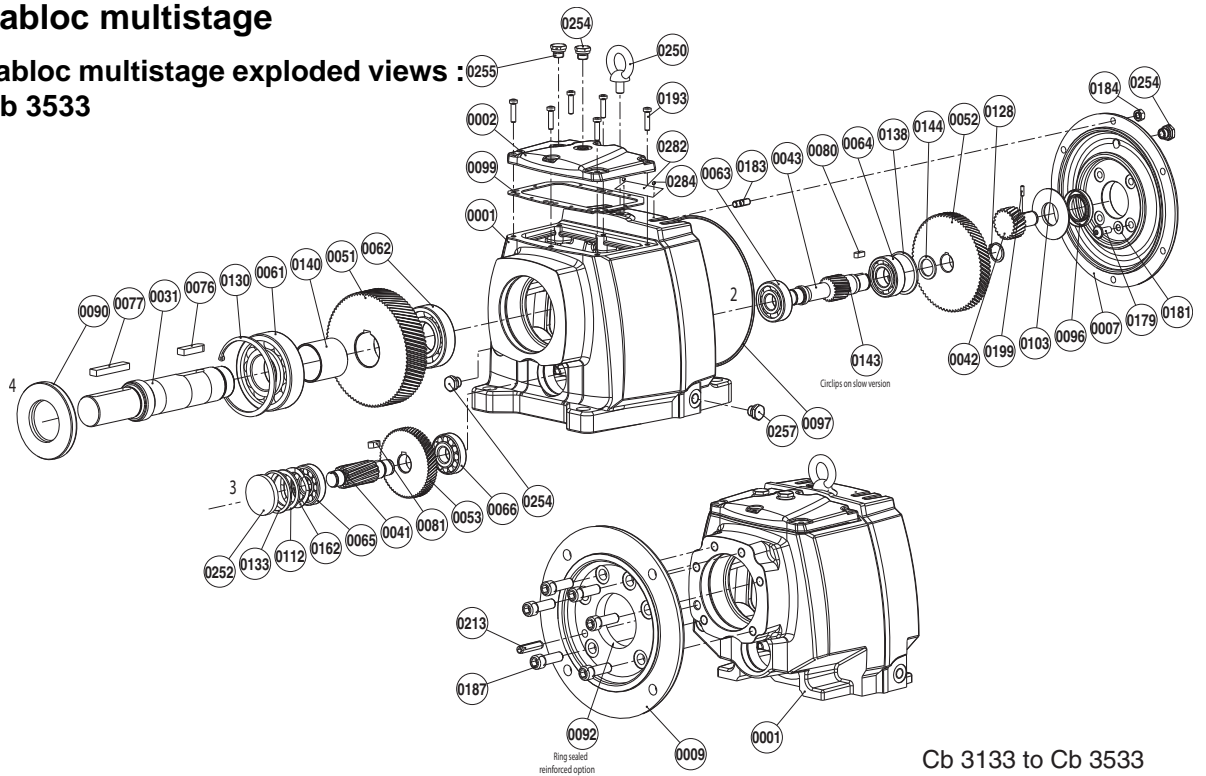
Drive systems

EXPLODED VIEWS - WEARING PARTS - PARTS LIST

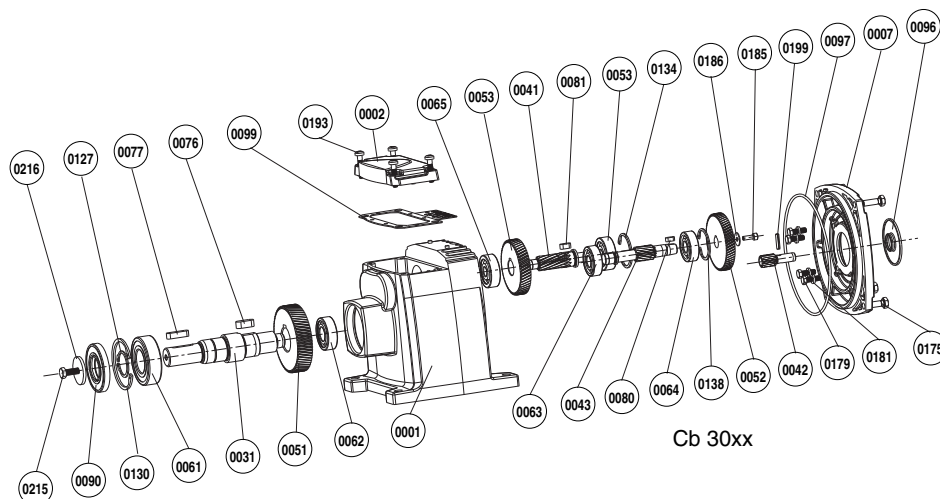
5.2 - Compabloc multistage

5.2.1 - Compabloc multistage exploded views :

Cb 3032 to Cb 3533



Cb 3133 to Cb 3533



Cb 30xx

5.2.2 - Compabloc multistage 1st maintenance parts : Cb 3033 to Cb 3533

REP	Description	Whatever the size of the gearbox may be
0061	Bearing front Axis 4	YES
0062	Bearing back Axis 4	YES
0063	Bearing front Axis 2	YES
0064	Bearing back Axis 2	YES
0065	Bearing front Axis 3	YES
0066	Bearing back Axis 3	YES
0090	Ring seal	YES
0092	Ring sealed reinforced	YES (Cb 3032 and Cb 3033 excepted)
0096	Ring seal	YES

COMPABLOC 3000

Drive systems

EXPLODED VIEWS - WEARING PARTS - PARTS LIST

5.2.3 - Cb 30xx to Cb 35xx parts list

REP	Description	Cb 3032 Cb 3033 Cb 31 2TCb 31 3TCb 32 2TCb 32 3TCb 33 2TCb 33 3TCb 34 2TCb 34 3TCb 35 2TCb 35 3TC														
		Qty	Qty	Qty	Qty	Qty	Qty	Qty	Qty	Qty	Qty	Qty	Qty	Qty	Qty	Qty
0001	Housing	1	1	1	1	1	1	1	1	1	1	1	1	1	1	
0002	Cover	1	1	1	1	1	1	1	1	1	1	1	1	1	1	
0007	Face-plate	1	1	1	1	1	1	1	1	1	1	1	1	1	1	
0009	Built-up flange	1	1	1	1	1	1	1	1	1	1	1	1	1	1	
0031	Output shaft	1	1	1	1	1	1	1	1	1	1	1	1	1	1	
0041	Pinion Axis 3	1	1	1	1	1	1	1	1	1	1	1	1	1	1	
0042	Pinion	1	1	1	1	1	1	1	1	1	1	1	1	1	1	
0043	Pinion Axis 2	0	1	0	1	0	1	0	1	0	1	0	1	0	1	
0051	Wheel Axis 4	1	1	1	1	1	1	1	1	1	1	1	1	1	1	
0052	Wheel Axis 2	1	1	0	0	1	1	1	1	1	1	1	1	1	1	
0053	Wheel Axis 3	0	1	0	1	0	1	0	1	0	1	0	1	0	1	
0061	Bearing front Axis 4	1	1	1	1	1	1	1	1	1	1	1	1	1	1	
0062	Bearing back Axis 4	1	1	1	1	1	1	1	1	1	1	1	1	1	1	
0063	Bearing front Axis 2	1	1	1	1	1	1	1	1	1	1	1	1	1	1	
0064	Bearing back Axis 2	1	1	0	0	1	1	1	1	1	1	1	1	1	1	
0065	Bearing front Axis 3	0	1	0	1	0	1	0	1	0	1	0	1	0	1	
0066	Bearing back Axis 3	0	1	0	1	0	1	0	1	0	1	0	1	0	1	
0076	Wheel key	1	1	1	1	1	1	1	1	1	1	1	1	1	1	
0077	Output shaft key	1	1	1	1	1	1	1	1	1	1	1	1	1	1	
0080	Wheel key	1	1	1	1	1	1	1	1	1	1	1	1	1	1	
0081	Wheel key Axis 3	0	1	0	1	0	1	0	1	0	1	0	1	0	1	
0090	Ring seal	1	1	1	1	1	1	0	0	1	1	1	1	1	1	
0092	Ring sealed reinforced (option for flange)	0	0	1	1	1	1	1	1	1	1	1	1	1	1	
0096	Ring seal	1	1	1	1	1	1	1	1	1	1	1	1	1	1	
0097	*O"ring gearbox input flange	1	1	1	1	1	1	1	1	1	1	1	1	1	1	
0099	Cover gasket	1	1	1	1	1	1	1	1	1	1	1	1	1	1	
0103	Oil deflector	0	0	1	1	1	1	1	1	1	1	1	1	1	1	
0111	Bearing spacer Axis 2	0	0	0	0	0	0	1	1	0	0	0	0	0	0	
0112	Bearing spacer Axis 3	0	0	0	0	0	1	0	1	0	1	0	1	0	1	
0114	Bearing spacer Axis 3	0	0	0	1	0	1	0	0	0	0	0	0	0	0	
0115	Bearing spacer Axis 2	0	0	0	0	1	0	0	0	1	0	0	0	0	0	
0127	Bearing circlips	1	1	0	0	0	0	0	0	0	0	0	0	0	0	
0128	Stop circlips wheel Axis 2	0	0	1	1	1	1	1	1	1	1	1	1	1	1	
0130	Bearing circlips Axis 4	1	1	1	1	1	1	1	1	1	1	1	1	1	1	
0132	Bearing circlips Axis 2	0	0	0	0	1	1	0	0	1	1	1	1	1	1	
0133	Bearing circlips Axis 3	0	0	0	1	0	1	0	1	0	1	0	1	0	1	
0134	Bearing circlips	0	1	0	0	0	0	0	0	0	0	0	0	0	0	
0138	Bearing circlips	1	1	1	1	0	0	1	1	0	0	0	0	0	0	
0140	Wheel distance piece Axis 4	0	0	1	1	1	1	1	1	1	1	1	1	1	1	
0143	Bearing distance piece	0	0	0	0	0	0	0	1	0	0	0	0	0	0	
0144	GV wheel distance piece	0	0	1	1	1	1	1	1	1	1	1	1	1	1	
0161	Elastic spacer	0	0	0	0	0	0	1	1	1	0	1	0	1	0	
0162	Elastic spacer	0	0	0	0	0	0	0	1	0	1	0	1	0	1	
0163	Elastic spacer	0	0	0	0	0	1	0	0	0	0	0	0	0	0	
0164	Elastic spacer	0	0	0	0	1	0	0	0	0	0	0	0	0	0	
0175	Screw for face-plate	4	4	4	4	5	5	0	0	0	0	0	0	0	0	
0179	Screw face-plate	4	4	4	4	4	4	4	4	4	4	4	4	4	4	
0181	Screw washer	4	4	4	4	4	4	4	4	4	4	4	4	4	4	
0183	Input fixing stud	0	0	0	0	0	0	6	6	4	4	8	8	8	8	
0184	Stud nut	0	0	0	0	0	0	6	6	4	4	8	8	8	8	
0185	GV wheel washer	1	1	0	0	0	0	0	0	0	0	0	0	0	0	
0186	Screw washer	1	1	0	0	0	0	0	0	0	0	0	0	0	0	
0187	Fixing screw	4	4	4	4	6	6	6	6	6	6	6	6	6	6	
0193	Cover fixing screw	4	4	4	4	6	6	6	6	6	6	8	8	8	8	
0199	GV pinion pin	1	1	1	1	1	1	1	1	1	1	1	1	1	1	
0213	Flange pin	0	0	1	1	1	1	1	1	1	1	1	1	1	1	
0250	Lifting ring	0	0	0	0	1	1	1	1	1	1	1	1	1	1	
0251	Obturator cap	0	0	0	0	1	1	0	0	1	1	1	1	1	1	
0252	Obturator cap Axis 3	0	0	0	1	0	1	0	1	0	1	0	1	0	1	
0254	Plug	1	1	3	3	3	3	3	3	3	3	4	4	4	4	
0255	Breather plug	0	0	1	1	1	1	1	1	1	1	1	1	1	1	
0257	Drain plug	0	0	1	1	1	1	1	1	1	1	1	1	1	1	
0282	Nameplate	1	1	1	1	1	1	1	1	1	1	1	1	1	1	
0284	Rivets (nameplate)	0	0	2	2	2	2	2	2	2	2	2	2	2	2	

en

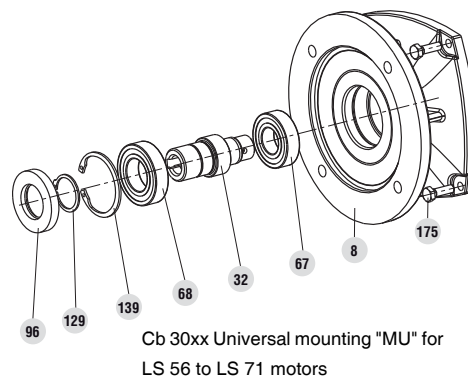
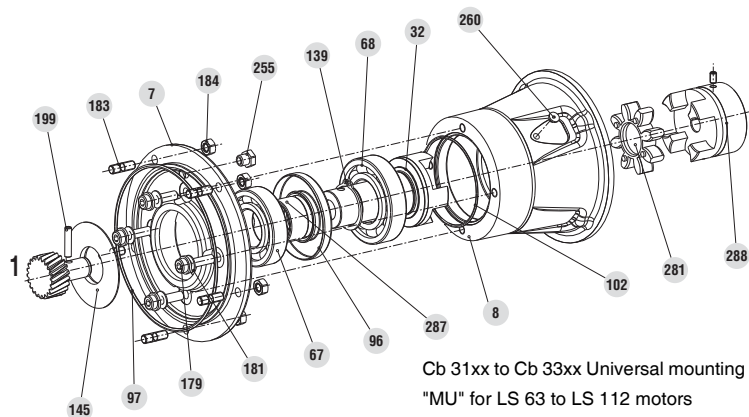
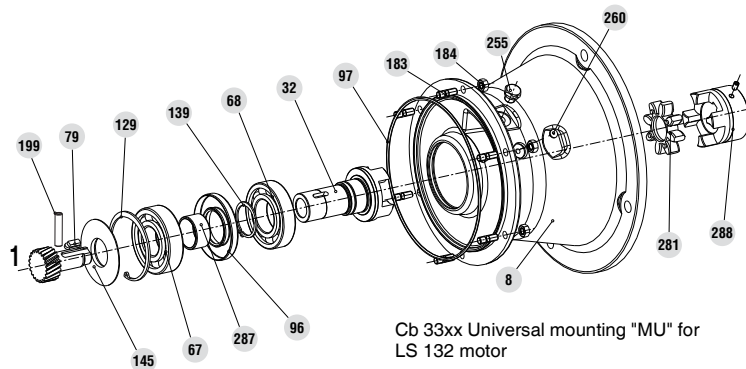
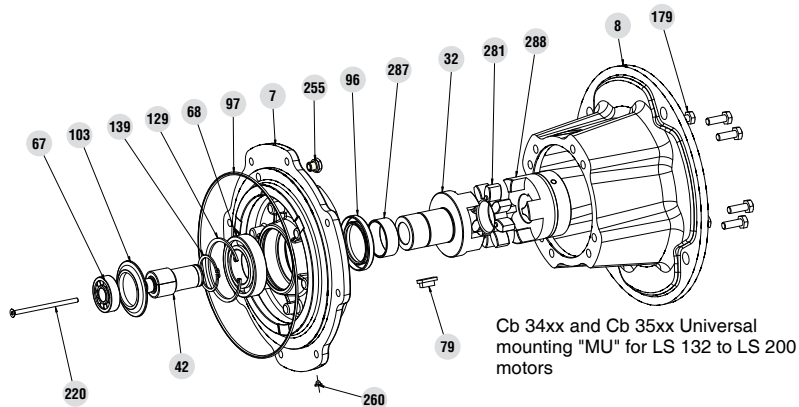
COMPABLOC 3000

Drive systems

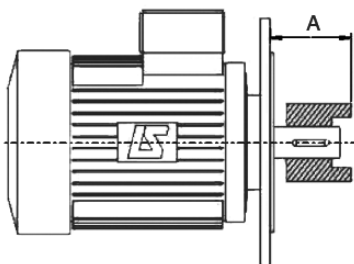
EXPLODED VIEWS - WEARING PARTS - PARTS LIST

5.3 - Universal mounting

5.3.1 - Universal mounting exploded views



Dimension A must be kept according to the table below ; you can measure it between the flange face of the motor and the end of the coupling.



Frame	Motor Flange	Shaft Ø	A value (mm)			
			Cb 31 / 32xx	Cb 33xx	Cb 34xx	Cb 35xx
LS 71	F 130	14x30	52.5	52.5	52.5	
LS 71	F 130	19x40	52.5	52.5	52.5	
LS 80	F 165	19x40	60.5	60.5	60.5	60.5
LS 90	F 165	24x50	60.5	60.5	60.5	60.5
LS 100	F 215	28x60	74.5	74.5	74.5	74.5
LS 112	F 215	28x60	74.5	74.5	74.5	74.5
LS 132	F 265	38x80		96.5	97.5	96.5
LS 160	F 300	42x110			130.5	130.5
LS 180	F 300	48x110			130.5	130.5
LS 200	F 350	55x110			130.5	130.5

COMPABLOC 3000

Drive systems

EXPLODED VIEWS - WEARING PARTS - PARTS LIST

5.3.2 - Universal mounting (MU) parts list

Rep	Description	LS 56 Qty	LS 63 Qty	LS 71 Qty	LS 80 Qty	LS 90 Qty	LS 100-112 Qty	LS 132 Qty	LS 160 Qty	LS 180 Qty	LS 200 Qty
7	Face plate			1	1	1	1	1	1	1	1
8	"U" mount housing	1	1	1	1	1	1	1	1	1	1
32	Input shaft MU axis 1	1	1	1	1	1	1	1	1	1	1
67	Bearing axis 1 gearbox side	1	1	1	1	1	1	1	1	1	1
68	Bearing axis 1 motor side	1	1	1	1	1	1	1	1	1	1
79	Stop-piece (rep 42)	1	1	0	0	0	0	1	0	0	0
96	Ring seal	1	1	1	1	1	1	1	1	1	1
97	O ring gearbox input flange	1	1	1	1	1	1	1	1	1	1
102	"U" mounting O ring	0	0	1	1	1	1	0	0	0	0
103	Endshield deflector	0	0	1	1	1	1	1	1	1	1
129	Bearing circlips Front	1	1	0	0	0	0	1	1	1	1
139	Bearing circlips Back	0	0	1	1	1	1	1	1	1	1
145	GV shaft deflector	0	0	1	1	1	1	1	1	1	1
175	Screw for face plate	4	4	0	0	0	0	0	0	0	0
179	Screw face plate	0	0	4	4	4	4	8	8	8	8
181	Screw washer (rep 179)	0	0	4	4	4	4	0	0	0	0
183*	Input fixing stud	0	0	*	*	*	*	*	*	*	*
184*	Stud nut	1	1	*	*	*	*	*	*	*	*
191	Fixing screw MU	0	0	4	4	4	4	4	4	4	4
192	Nut (rep 191)	0	0	4	4	4	4	4	4	4	4
199	GV pinion pin	0	0	1	1	1	1	1	1	1	1
220	Screw for h32 pinion adaptator (rep 34)	0	0	0	0	0	0	1	1	1	1
255	Breather plug	0	0	1	1	1	1	1	1	1	1
260	Blow-off plug	1	1	1	1	1	1	1	1	1	1
281	Flexible joint	0	0	1	1	1	1	1	1	1	1
287	INA ring for ring seal	0	0	1	1	1	1	1	1	1	1
288	MU coupling	0	0	1	1	1	1	1	1	1	1

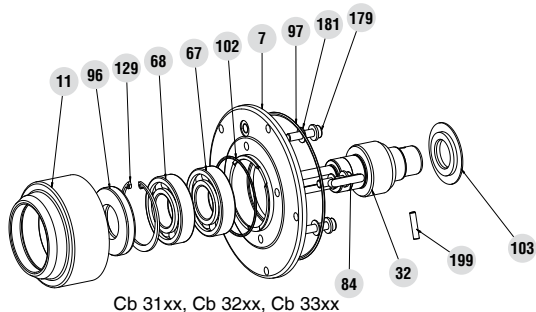
183* and 184* : quantities are in direct connection with size of gearbox (see § 5.1.4)

5.3.3 - Universal mounting (MU) 1st maintenance parts

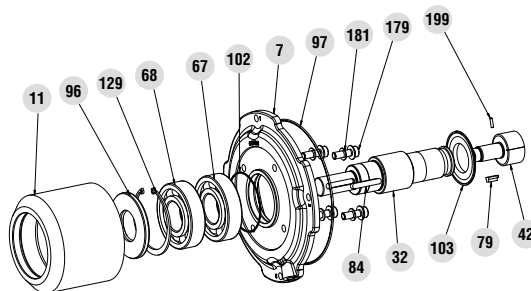
Rep	Description	LS 56	LS 63	LS 71	LS 80	LS 90	LS 100-112	LS 132	LS 160	LS 180	LS 200
67	Bearing axis 1 gearbox side						YES				
68	Bearing axis 1 motor side						YES				
96	Ring seal						YES				

5.4 - Input shaft AP

5.4.1 - AP exploded view



Cb 31xx, Cb 32xx, Cb 33xx



Cb 34xx, Cb 35xx

5.4.2 - AP parts list

Rep	Description	Cb 31 to Cb 33 Qty	Cb 34 Qty	Cb 35 Qty	Rep	Description	Cb 31 to Cb 33 Qty	Cb 34 Qty	Cb 35 Qty
7	Face plate	1	1	1	103	Oil deflector	1	1	1
11	AP shield	1	1	1	129	Bearing circlips Front	1	1	1
32	Input shaft AP axis 1	1	1	1	179	Screw face plate	4	4	8
67	Bearing axis 1 gearbox side	1	1	1	181	Screw washer (rep 179)	4	4	8
68	Bearing axis 1 motor side	1	1	1	183*	Input fixing stud	*	*	*
79	Stop-piece (rep 42)	1	1	1	184*	Stud nut (rep 183)	*	*	*
84	AP shaft key	1	1	1	199	GV pinion pin (rep 42)	1	1	1
96	Ring seal	1	1	1	220	Screw for pinion (MI h32)	0	1	1
97	O ring axis 1 input face plate	1	1	1	254	E-R/N/V plug	0	0	1
102	"U" mounting O ring	1	1	1					

1. E-R/N/V : "E" breather-"R" Filling/"N" level/"V" draining plug

183* and 184* : quantities are in direct connection with size of gearbox (see § 5.1.3 and 5.2.3)

5.4.3 - AP 1st maintenance parts

Rep	Description	AP Cb 31 to Cb 35
67	Bearing axis 1 gearbox side	YES
68	Bearing axis 1 motor side	YES
96	Ring seal	YES

COMPABLOC 3000

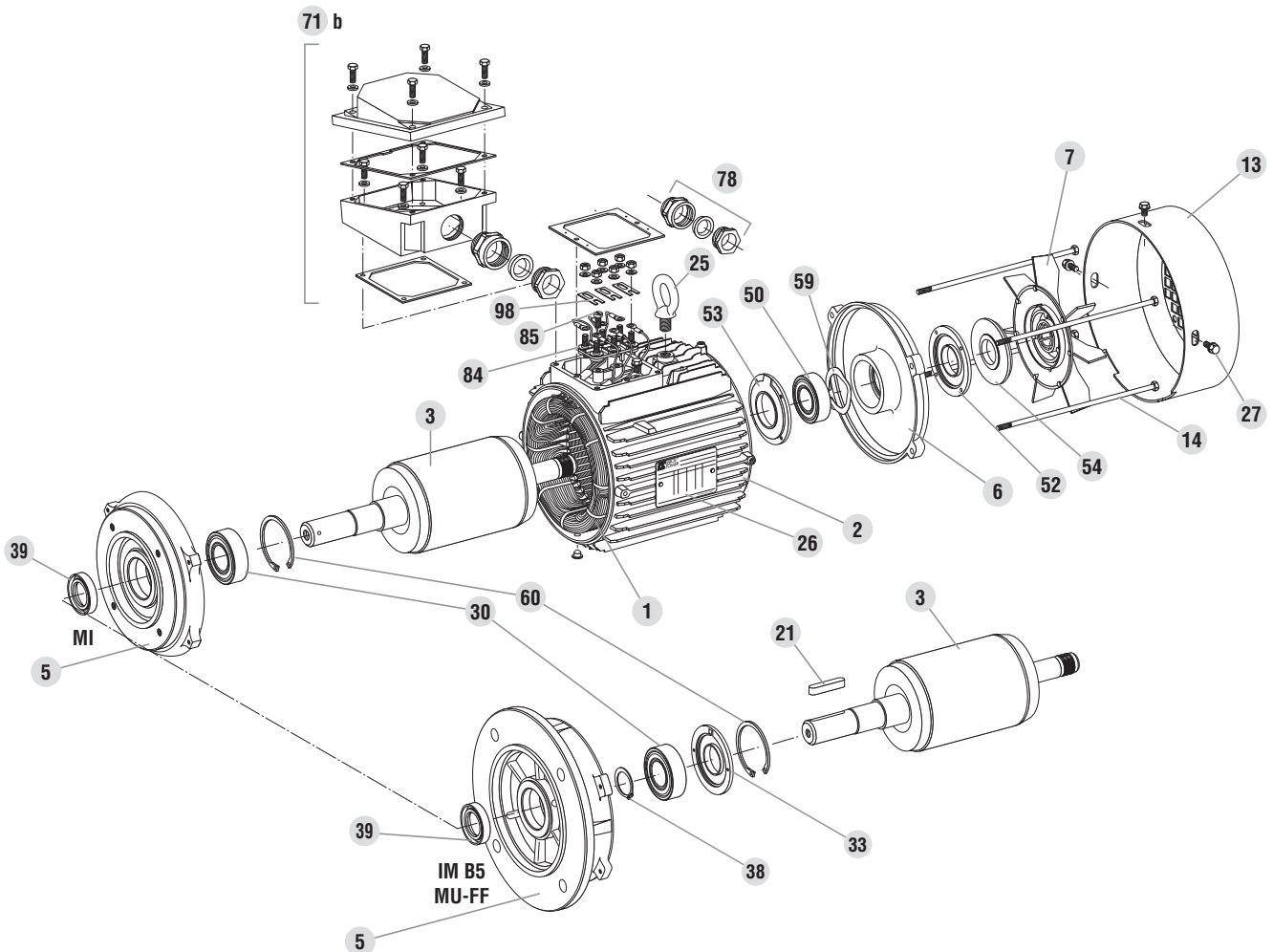
Drive systems

EXPLODED VIEWS - WEARING PARTS - PARTS LIST

5.5 - Motor

5.5.1 - Motor exploded views

Frame size 56 to 200



5.5.2 - Motor parts list

Frame size : LS 56 to LS 200

REP	Description	REP	Description	REP	Description
1	Wound stator	25	Lifting ring	53	NDE internal bearing retainer (LS 200)
2	Housing	26	Nameplate	54	NDE seal
3	Rotor	27	Coverfixing screw	59	Preloading (wavy) washer
5	Drive end shield	30	DE bearing	60	Circlips
6	Non drive end shield	33	Bearing retaining plate (LS 160 --> 200)	71 b	Metal terminal box
7	Fan	38	Drive end bearing circlip (LS 160 --> 200)	78	Cable gland
13	Fan cover	39	DE seal	84	Terminal block
14	Tie rods	50	NDE bearing	85	Set screw
21	Keyway	52	NDE external bearing retainer (LS 200)	98	Connector links

COMPABLOC 3000

Drive systems

PLUGS POSITIONS - OIL QUANTITIES

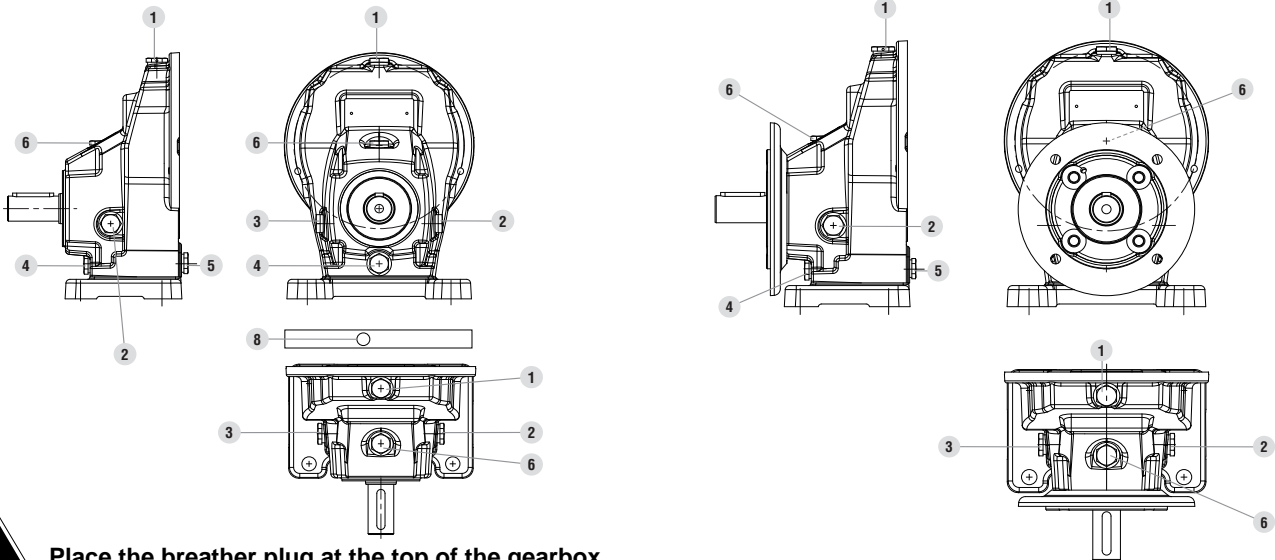
6 - PLUGS POSITIONS - OIL QUANTITIES



Rep. 8 on motor face plate or U-mount housing

6.1 - Compabloc 1 stage

6.1.1 - Plugs positions



Place the breather plug at the top of the gearbox.

6.1.2 - Oil quantity in litre (considering operating position)

		Plug type	Cb 3031 ¹	Plug position	Cb 3131 litre ²	Plug position	Cb 3231 litre ²	Plug position	Cb 3331 litre ²	Plug position	Cb 3431 litre ²	Plug position	Cb 3531 litre ²
B3		Level	-	2 - 3	0,35	2 - 3	0,25	2 - 3	0,9	2 - 3	2	2 - 3	3,2
		Draining		4		4		4		4			
		Breather		1 - 8		1 - 6 - 8		1 - 8		1 - 8			
		Filling		1 - 8		1 - 6 - 8		1 - 8		1 - 8			
B6		Level	-	1 - 4 - 5	0,5	1 - 4 - 6 -	0,55	1 - 4 - 5	1,4	1 - 4	3	1 - 4	5
		Draining		2* - 8*		2* - 8*		2* - 8*		2* - 8*			
		Breather		3 - 8*		3 - 8*		3 - 8*		3 - 8*			
		Filling		3 - 8*		3 - 8*		3 - 8*		3 - 8*			
B7		Level	-	1 - 4 - 5	0,5	1 - 4 - 6 -	0,55	1 - 4 - 5	1,4	1 - 4	3,2	1 - 4	5
		Draining		3* - 8*		3* - 8*		3* - 8*		3* - 8*			
		Breather		2 - 8*		2 - 8*		2 - 8*		2 - 8*			
		Filling		2 - 8*		2 - 8*		2 - 8*		2 - 8*			
B8		Level	-	2 - 3	0,7	2 - 3	0,75	2 - 3	1,9	2 - 3	4,2	2 - 3	7,3
		Draining		1		1		1		1			
		Breather		4 - 5		4 - 5		4 - 5		4 - 5			
		Filling		4 - 5		4 - 5		4 - 5		4 - 5			
V5		Level	-	1	0,55	1	0,6	1	2,1	1	3,8	1	5,8
		Draining		4		4		4		4			
		Breather		5 - 8		5 - 8		5 - 8		5 - 8			
		Filling		5 - 8		5 - 8		5 - 8		5 - 8			
V6		Level	-	1	1,0	2 - 3	0,8	2 - 3	2,1	2 - 3	3	2 - 3	5,5
		Draining		1 - 8		1 - 8		1 - 8		1 - 8			
		Breather		4		4		4		4			
		Filling		2 - 3 - 4		2 - 3 - 4		2 - 3 - 4		2 - 3 - 4			

¹ : Cb 3031 (multi-position) is lubricated for life with 0,3 l oil EP ISO VG 220

² : Limits : ± 0.05 litre for oil quantity < 5 litres
± 2 % for oil quantity ≥ 5 litres

2* : partial draining

3* : partial draining

8* : depending on face-plate position

In case of operating position in inclined plan (option), a study will be done.

COMPABLOC 3000

Drive systems

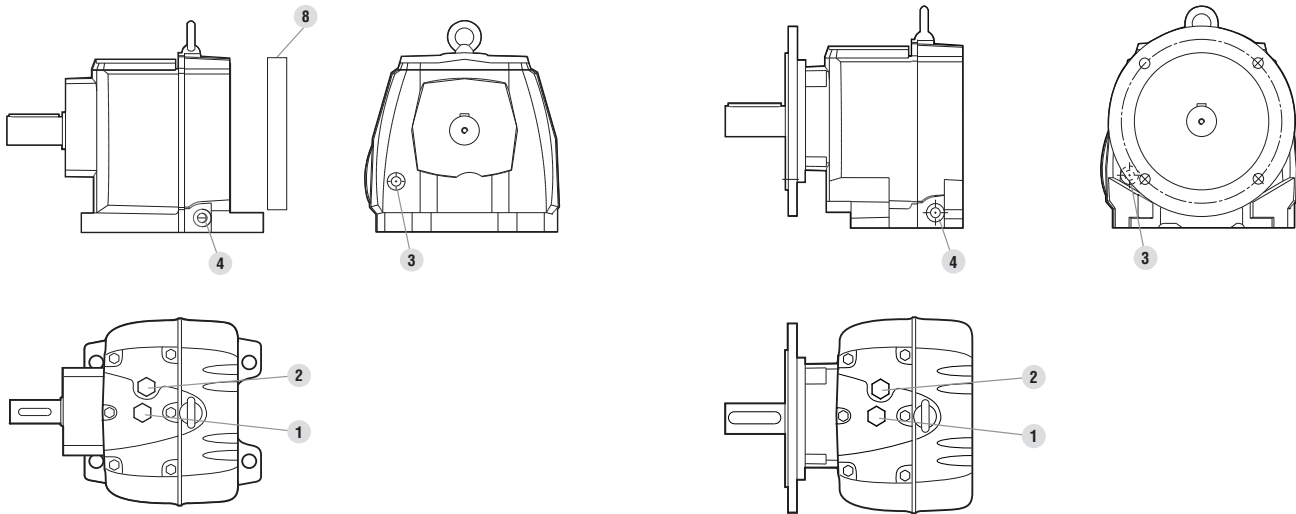
PLUGS POSITIONS - OIL QUANTITIES

6.2 - Compabloc multistage

6.2.1 - Plugs positions



Rep.8 on motor face plate or U-mount housing



Place the breather plug at the top of the gearbox.

6.2.2 - Oil quantity in litres (considering operation position)

Plug type	Plug position	Cb 3032 ¹ litre ²	Cb 3033 ¹ litre ²	Cb 31xx litre ²		Cb 32xx litre ²		Cb 33xx litre ²		Cb 34xx litre ²		Cb 35xx litre ²			
				2T	3T	2T	3T	2T	3T	2T	3T	2T	3T		
		Level	3	0,6	0,7	0,6		0,95		1,6		3,3		5,2	
		Draining	4												
		Breather	1 - 2												
		Filling	1 - 2												
		Without													
		Level	2	0,6	0,7	0,95	1,23	1,75	2,3	3,3	4,37	7		9,9	12,5
		Draining	4												
		Breather	3 - 8*												
		Filling	3												
		Without													
		Level	1	0,6	0,7	0,85		1,55		2,95		4,7		8,3	
		Draining	3*												
		Breather	4 - 8*												
		Filling	4												
		Without													
		Level	3	0,6	0,7	1,1		2,25		4,45		6,7		13,2	
		Draining	1 - 2												
		Breather	4 - 8*												
		Filling	4												
		Without													
		Level	4	0,6	0,7	1,15		2,25		4,5		7,5		14,7	
		Draining	3												
		Breather	8												
		Filling	4 - 8												
		Without													
		Level	1 - 2	0,6	0,7	1,4		2,7		4,4		7,5		13,7	
		Draining	4 - 8												
		Breather	3												
		Filling	3												
		Without													

¹ : This gearbox is lubricated for life with EP ISO VG 220

² : Limits : ± 0.05 litre for oil quantity < 5 litres
± 2 % for oil quantity ≥ 5 litres

3* : partial draining

8* : depending on face-plate position

In case of operating position in inclined plan (option) a study will be done.