

Identifying Lenze/INTORQ BFK458 brake spares

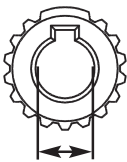
- Spring applied, electrical release disc brakes in 9 sizes, 06 to 25
- dc coils - standard voltages of 24/103/180/205 Vdc
- Most components individually replaceable (see over)

The brake stops a shaft against a fixed frame, e.g. a motor body.

The brake hub is bored and keyed to fit the shaft and drives the rotating friction disc (rotor) via a splined toothed drive. Energising the coil releases the brake.

The coil in the stator/armature assembly is identified by a type label which gives details of type, size, coil voltage and torque.

If the hub needs replacing, you will need to measure the bore where it fits the shaft.



Hub with bore



Rotor

A complete brake

Comprises a minimum of 4 components:

- Stator/armature assembly (Item 1)
- Hub - state bore size required (Item 3)
- Rotor with friction linings (Item 4)
- Assembly screw kit (Item 6)

Accessories

Rear mounting surface either:

- Thin steel friction plate (Item 8)
- Thick mounting flange (Item 9)

Spares

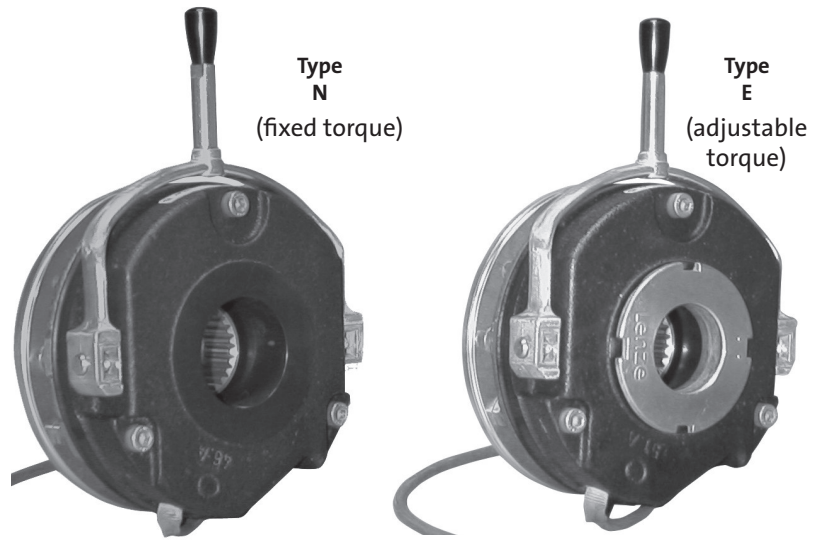
Interchangeability with previous models (see over for part numbers).

BFK458.XX N or E	Size	06	08	10	12	14	16	18	20	25
14.448.XX	✗	✗	✓	✓	✓	✓*	✓	✓	✓	✓
14.449.XX	✓	✓				(*except special see below)				
14.450.XX	✗	✗	✗	✗	✗	✗	✗	✗	✗	✗
BFK460.XX	✓	✓	✓	✓	✓	✓	✓	✓	✓	✓

✗ = replace complete brakes

Special models

- Cranes and hoists - Approved safety procedures are required for work on cranes and hoists. Spares should be referred to specialists.
- Fork lift trucks - Many trucks are fitted with either non-standard voltage coils or with totally special designs. Either may be subject to minimum supply quantities.
- Woodworking - Type 14.448.14.210 with 103 volt coil ident 368219 is a special available from Lenze.
Type 14.448.14.210 with 205 volt coil ident 366746 is only available from Michael Weinig (UK) Ltd.



Label information for Stator/Armature assembly

Field	Content			Example: Size 06-16	
1	Manufacturer	Brake type	Type No.	INTORQ BFK458-06E Nr. 519508	
2	Rated voltage	Rated power	Rated brake torque/CE mark	205V DC 20W	4.0NM
3	Date of manufacture			80515	CE
Field	Content			Example: Size 18-25	
1	Manufacturer			INTORQ Aerzen	
2	Brake type			Typ: BFK458-25E	
3	Rated voltage	Rated power		205V DC 110W	
4	Rated brake torque	Date of manufacture		400NM	80515
5	Type No.	CE mark		Nr. 521388	CE

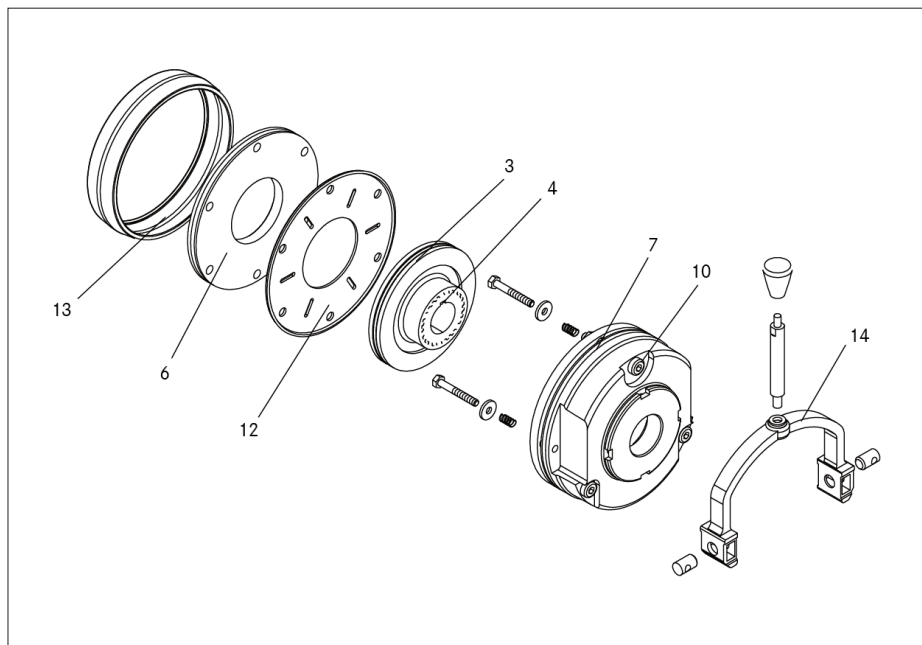
Rectifiers

Rectifiers convert ac supply to dc. They are available as full wave or ½ wave, 4 terminal or 6 terminal for faster switching. They should be selected to match the coil voltage to supply voltage as below:



Supply voltage ac	Rectifier type	Coil voltage dc
110	Full wave	103
230-240	Full wave	205
230-240	Half wave	103
380-415	Half wave	180

Spares



Key to parts and accessories

- 3 Rotor
- 4 Hub
- 6 Mounting flange
- 7 Stator Assembly
- 10 Assembly kit
- 12 Friction plate
- 13 Seal
- 14 Hand release kit

Item	Brake size	06	08	10	12	14	16	18	20	25	
3	Diameter / Bore / No. of teeth	60 x 25 x 15T	77 X 25 X 26T	95 X 35 X 26T	115 X 40 X 30T	124 X 45 X 34T	149 X 55 X 26T	174 X 65 X 31T	206 X 70 X 34T	254 X 95 X 46T	
	Rotor, metal-based	396 186	396 200	396 202	396 214	396 215	396 252	396 253	396 280	396 288	
4	Diameter / Width / No. of teeth	25 x 18 x 14T	35 x 20 x 26T		40 x 25 x 30T	45x 30 x 34T	55 x 30 x 26T	65 x 35 x 31T	70 x 40 x 34T	95 x 50 x 46T	
	Hub (bores available) (Bore/Material number)		PB/376 078		PB/035 596	PB/027 938	PB/024 105	PB/034 587	PB/034 593	PB/034 599	
			ø10/376 077	PB/024 043	ø15/011 294	ø20/011 296	ø25/024 106	ø35/034 589	ø35/034 595	ø40/034 600	
			ø11/376 076	ø11/025 552	ø20/011 295		ø25/025 353	ø30/011 298	ø40/034 591	ø40/034 596	
			ø14/376 074	ø12/083 038	ø24/033 625	ø25/011 297	ø30/395 995	ø35/011 299	ø45/034 592	ø45/034 597	
			ø15/181 062	ø14/078 826						ø60/034 604	
6	Mounting flange	397 398	397 513	397 683	397 747	397 878	398 426	398 427	398 428	398 430	
7	Body Diameter (mm)	87	105	130	150	165	190	217	254	302	
	Stator and armature assembly	24V	519 497	519 514	520 879	520 882	521 369	520 174	520 230	521 423	521 379
		103V	519 498	519 516	521 304	521 343	521 370	520 176	520 274	587 609	703 811
		180V	519 499	519 517	521 305	521 344	521 371	520 177	565 681	1510 1354	1502 9781
205V	519 500	519 518	520 878	520 884	521 372	520 178	520 245	521 426	521 382		
Type E	Stator and armature assembly	24V	519 501	519 521	520 872	520 880	521 373	520 179	520 246	521 427	521 385
		103V	519 504	519 522	521 306	521 348	521 374	520 181	520 247	521 428	521 386
		180V	519 506	519 523	521 307	521 349	521 375	520 182	520 249	521 429	521 387
		205V	519 508	519 524	520 874	520 881	521 376	520 183	520 250	521 430	521 388
10	Thread / short / long length	M4 x 35/40	M5 x 40/45	M6 x 50/55	M6 x 55/60	M8 x 65/70	M8 x 70/80	M8 x 80/90	M10 x 90/100	M10 x 100/110	
	Assembly kit (short)	399 492	399 502	399 506	399 507	399 511	399 512	399 515	399 517	399 518	
	Assembly kit (long)	399 500	399 504	399 507	399 509	399 512	399 513	399 516	399 518	399 520	
12	Friction plate	397 383	397 514	076 260	367 734	397 755	076 264	-	-	-	
13	Seal	405 194	405 197	405 198	405 199	405 201	405 202	120 591	120 592	120 593	
14	Hand release kit	401 229	401 232	401 233	401 235	401 236	401 238	401 239	401 240	401 241	

Items in red type are normally held in stock

Lenze

Lenze Ltd. Fraser Road, Priory Business Park, Bedford MK44 3WH
 Tel: 01234 753201 • Fax: 01234 753220
 Email: sales@lenze.co.uk • www.lenze.com